



**WE
DEVELOP
ROOFING
IDEAS**



WITH NATURE IN MIND

we create and develop innovative building solutions.

• Tatra National Park, Poland



Eurovent® brand carries the latest achievements and innovative solutions in the field of roof and house insulation, through which its products are viewed as premium in their category.

It is more than 25 years of experience in designing, production and distribution of roof membranes, roof accessories for pitched roofing and attics.



German Quality and Technology

EUROVENT WORLDWIDE



25 YEARS OF
EXPERIENCE



250 STRATEGY
CLIENTS



48 COUNTRIES



350 PRODUCTS
AVAILABLE



■ Company
○ Sales Partners

INDIA

Slovenia Azerbaijan
Italy Netherlands
Austria Albania
Latvia Lithuania

GERMANY

USA Belarus
Estonia Bosnia and Herzegovina
Russia Republic of Korea

Macedonia
Turkey
Romania
Slovakia

Sweden Denmark
Canada Czech Republic
Germany Hungary
Morocco Spain
Serbia Switzerland
Norway Ireland

POLAND

Bulgaria Moldova
Taiwan Malaysia
Kazakhstan Finland
Kyrgyzstan

JAPAN

United Kingdom

France
Georgia
Greece



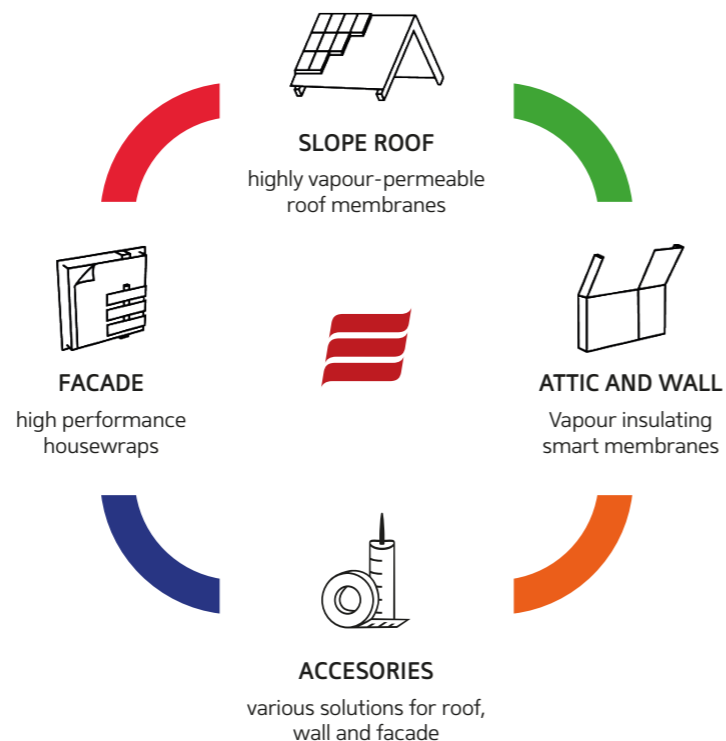
From the project to realization

According a client's desires, we are able to perform individual indications on products, as well as labelling and a package corresponding to the presented demands.

The Your Brand program is dedicated to the most demanding clients, who we offer preparation of products from our portfolio in accordance with their private brand.

Join to the best ones

There are manufacturers of roof coverings, independent distributors, sales networks and building markets among our clients, who we prepare membranes and roof accessories for.



› Wide range of colours for Your own membranes

- RED
- LIGHT RED
- GREEN
- LIGHT GREEN
- BLUE
- LIGHT BLUE
- ORANGE
- PINK
- PURPLE
- YELLOW

- BLACK
- GREY

...and more



* wide range of colours available on request.

ROOF INSULATION

Highly vapour-permeable airtight roof membranes are used as an insulating layer for clay, concrete roof tiles, steel roof tiles, flat sheet metals, slates and shingles.



HOME PRO

- Three layer water vapour highly permeable airtight premium housewrap and roofing underlay
- Used as the underlay on the slope roof and as the housewrap on the facade, in the timber, brick, concrete and prefabricated construction, timber framing, CLT, passive houses and full sheathing.
- Available in the SYSTEM SK2.

ca. 135 g/m ²	ca. 0,02 m	1,5 m x 50 rm 3,0 m x 50 rm*	50 Rolls



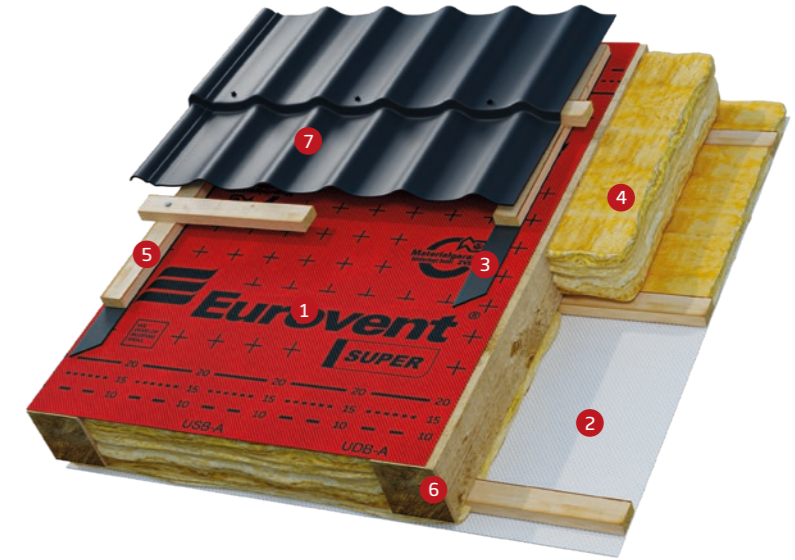
SUPER

- Three-layer, highly vapour-permeable airtight roof membrane, available in three different colours.
- Resistant to tearing.
- Used for insulated and ventilated pitched roofs, also with full sarking as well as for timber houses.
- Available in the SYSTEM SK2.

ca. 170 g/m ²	ca. 0,02 m	1,5 m x 50 rm	40 Rolls

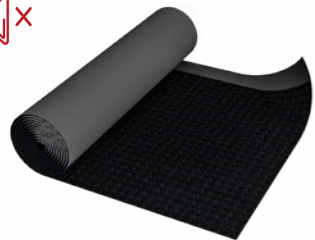
- RED
- GREEN
- BLACK

* on order



› Application of Eurovent® SUPER on sloping insulated and ventilated roof

- 1 Eurovent® SUPER
- 2 Eurovent® CLIMA
- 3 Eurovent® PUR
- 4 Thermal insulation
- 5 Batten
- 6 Rafter
- 7 Metal roof tiles



METALLIC

- Three-layer roof membrane with multifilament.
- Used for sloping roofs, facades and frame constructions. Recommended under metal coverings and elevations.
- Drains condensate.
- Available in the SYSTEM SK.
- Acoustic isolation, reduces noise - 25 dB.



ca. 450 g/m²



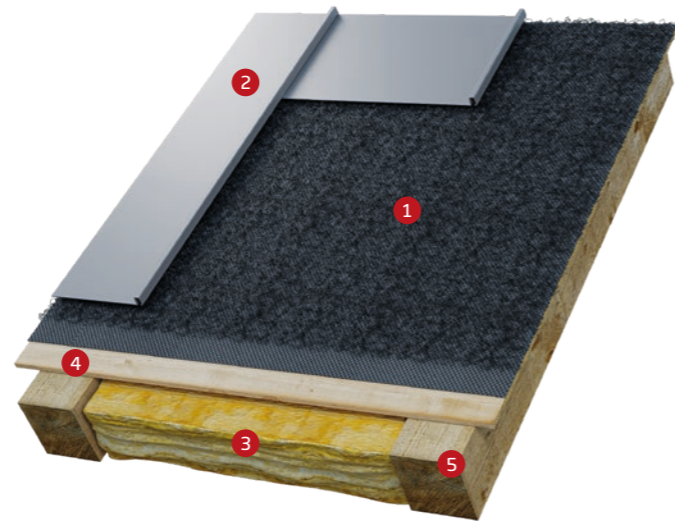
ca. 0,02 m



1,5 m x 50 m



8 Rolls



› Application of Eurovent® METTALIC on sloping insulated and ventilated roof

- | | |
|----------------------|------------------|
| 1 Eurovent® METTALIC | 4 Full sheathing |
| 2 Flat metal sheet | 5 Rafter |
| 3 Thermal insulation | |

ONLY THE BEST

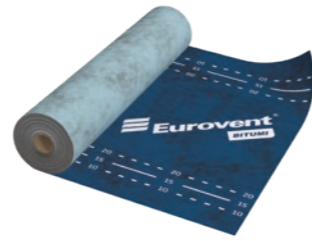
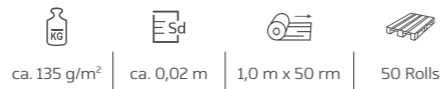
every day we take special care
to supply only the highest quality products.
We care about you.





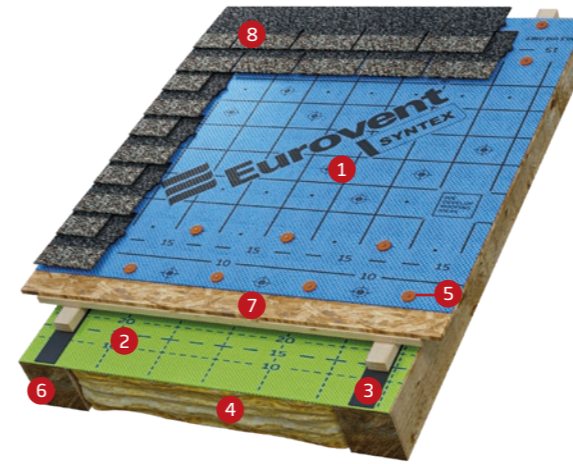
SYNTEX

- Four-layer synthetic roof underlay.
- Designed for ventilated sloping roofs with full sheathing only.
- Recommended for application with shingles as well as slates
- Available in the SYSTEM SK2.



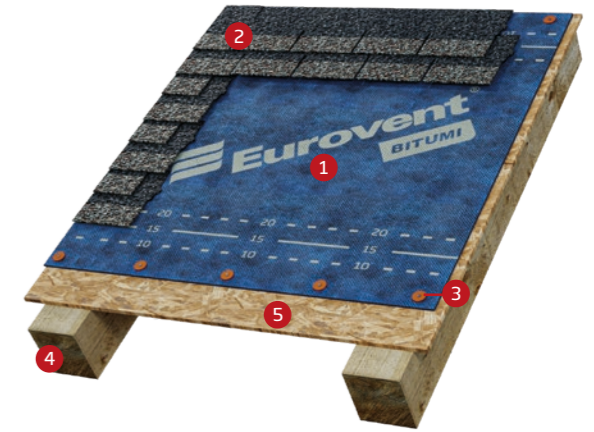
BITUMI

- Three-layer, bitumen roof membrane.
- Used for sloping, insulated and ventilated roofs, covered with bituminous shingle and slate.
- Used for full sheathing roofs only.
- Available in the SYSTEM SK2.



› Application of Eurovent® SYNTEX on sloping insulated and ventilated roof

- | | |
|----------------------|----------------------|
| 1 Eurovent® SYNTEX | 5 Cap nails |
| 2 Eurovent® HOME PRO | 6 Rafter |
| 3 Eurovent® PUR | 7 OSB board |
| 4 Thermal insulation | 8 Bituminous shingle |



› Application of Eurovent® BITUMI on sloping roof

- | | |
|----------------------|-------------|
| 1 Eurovent® BITUMI | 4 Rafter |
| 2 Bituminous shingle | 5 OSB board |
| 3 Cap nails | |



SYSTEM SK2

membrane with two self-adhesive tapes.

The SK2 system is an innovative system of joining the laps by the use of two self-adhesive tapes. The SK2 system enables easier installation as well as guarantees proper overlaps adhesion. Effective membranes joining is possible only in case of using two overlapping tapes, which join membranes durably in all atmospheric conditions.

- Adhesion possible at all atmospheric conditions.
- Effective roof insulation.
- Improved protection against wind and moisture.
- Thermal energy saving.

SYSTEM SA

membrane with self adhering layer

Self - adhesive airtight and watertight membrane
The SA system is a self-adhering glue coating applied on the entire membrane surface. The membrane is specifically designed for self-adhering to a prepared substrate and provides a high-performance watertight and airtight barrier.

- Perfect adhesion to walls and big surfaces.
- Fast and easy installation.
- Tear resistant.
- High wind and moisture protection.




HOUSEWRAPS

Wind barrier membranes are used for the protection of facades against wind, rain and moisture. They are applied in case of facade insulation systems, metal facades, frame construction as well as in case of log houses too.










HOME PRO

- Three layer airtight, water vapour highly permeable premium housewrap and roofing underlay
- Used as the underlay on the slope roof and as the housewrap on the facade, in the timber, brick, concrete and prefabricated construction, timber framing, CLT, passive houses and full sheathing.
- Available in the SYSTEM SK2 and SA.

 ca. 135 g/m² |
  ca. 0,02 m |
  1,5 m x 50 m / 3,0 m x 50 m* |
  50 Rolls



› Application of Eurovent® HOME PRO with SA SYSTEM on timber frame wall.

- | | |
|---|--|
|  Eurovent® HOME PRO SA |  Plasterboard |
|  Eurovent® AKTIV FR |  OSB board |
|  Eurovent® EPDM PRO |  Batten |
|  Thermal insulation |  Facade |



WALL PROTECT 3





- Three-layer, airtight, watertight, highly vapour-permeable membrane.
- UV resistant.
- Used for closed facades.
- Available in the SYSTEM SK2.
- Available in the SYSTEM SA.
- Available also without prints*.

			
ca. 90 g/m ²	ca. 0,02 m	1,5 m x 50 rm 3,0 m x 50 rm*	50 Rolls



CLASSIC





- Three layer airtight, water vapour highly permeable housewrap and roofing underlay.
- Used as the housewrap in the prefabricated construction, timber framing, passive houses and full sheathing.
- Available in the SYSTEM SK2.

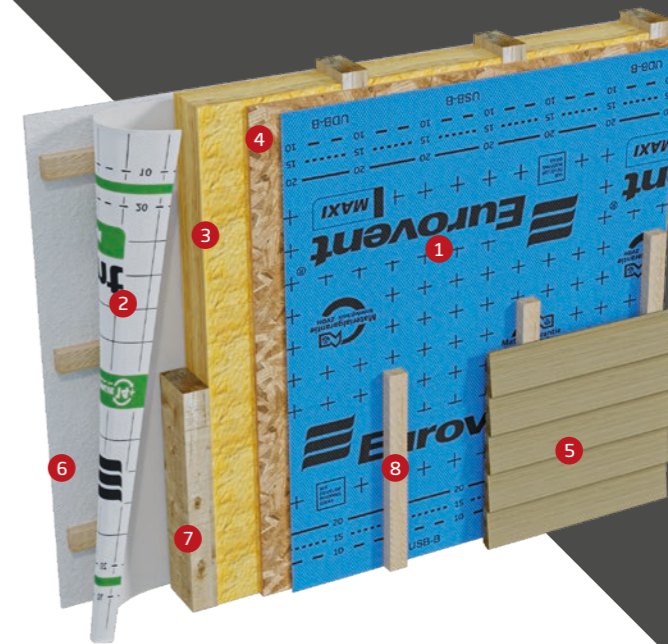
			
ca. 120 g/m ²	ca. 0,02 m	1,5 m x 50 rm	50 Rolls



MAXI

- Three layer airtight, water vapour highly permeable housewrap and roofing underlay.
- Used as the housewrap in the prefabricated construction, timber framing, passive houses and full sheathing.
- Resistant to tearing.
- Available in the SYSTEM SK2.

			
ca. 140 g/m ²	ca. 0,02 m	1,5 m x 50 rm	50 Rolls



› Application of Eurovent® MAXI in closed facade construction

- | | | |
|-----------------------------|------------------------|-----------------------|
| 1 Eurovent® MAXI | 4 OSB board | 7 Timber frame |
| 2 Eurovent® CLIMA | 5 Facade planks | 8 Batten |
| 3 Thermal insulation | 6 Plasterboard | |

* on order



FASSADE

- Two-layer, airtight, watertight, highly vapour-permeable membrane.
- Extremely UV resistant
- Designed for open-joint cladding systems.
- Available in the SYSTEM SK2.
- Available also without prints*.
- Flammability class - B-s1, d0.



ca. 210 g/m²



ca. 0,02 m



1,5 m x 50 mm

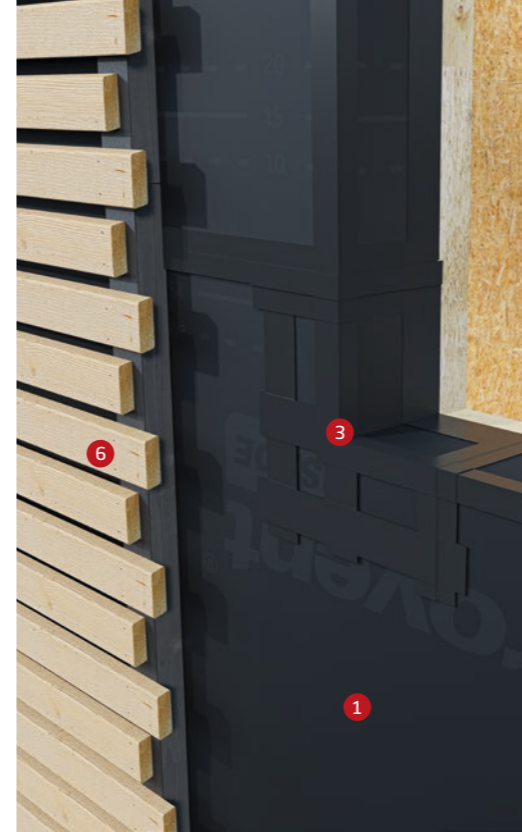


40 Rolls



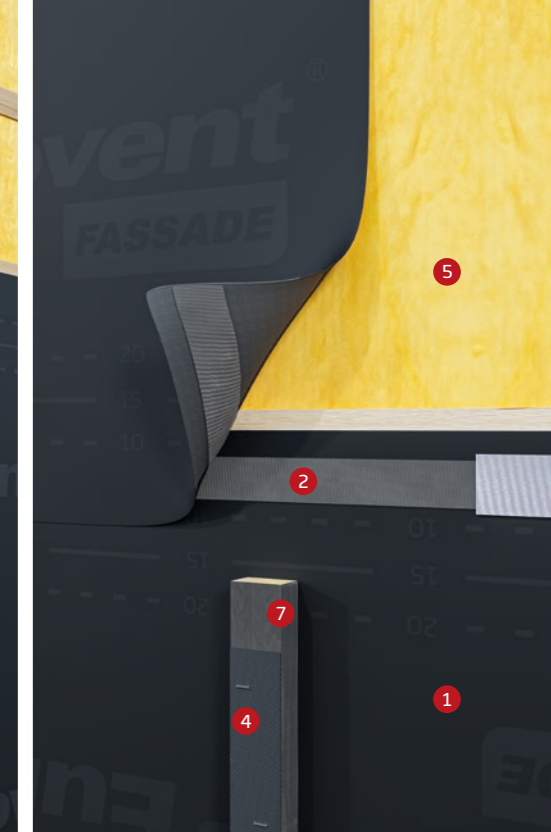
› Application of Eurovent® FASSADE in open-joint cladding systems

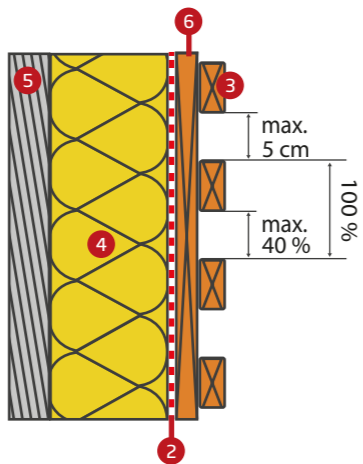
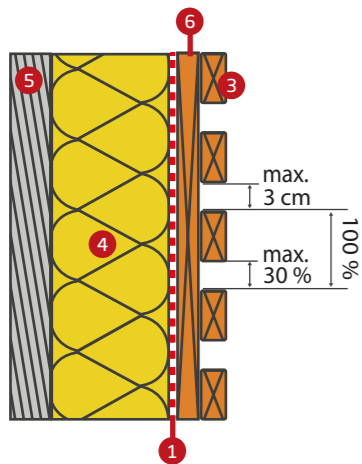
- | | |
|----------------------|------------------------------|
| 1 Eurovent® FASSADE | 4 OSB board |
| 2 Eurovent® EPDM PRO | 5 Open-joint cladding system |
| 3 Thermal insulation | 6 Plasterboard |



› Application of Eurovent® FASSADE

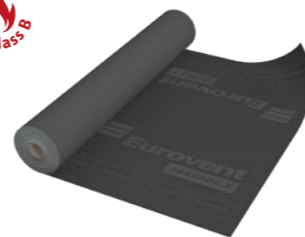
- | | | | |
|------------------------|-------------------------|----------------------|----------|
| 1 Eurovent® FASSADE | 3 Eurovent® UNO COLD UV | 5 Thermal Insulation | 7 Batten |
| 2 Eurovent® SYSTEM SK2 | 4 Eurovent® EPDM PRO | 6 Facade | |





› Open-joint cladding system

- 1 Eurovent® FASSADE
- 2 Eurovent® FASSADE X
- 3 Facade cladding
- 4 Thermal insulation
- 5 Wall
- 6 Batten



FASSADE X

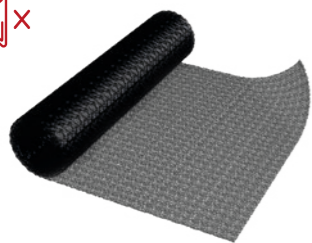
- Two-layer, airtight, watertight, highly vapour-permeable membrane.
- Extremely UV resistant
- Designed for open-joint cladding systems.
- Available in the SYSTEM SK2.
- Available also without prints*.
- Fammability class - B-s1, d0.
- Increased resistance to tearing.

ca. 270 g/m² |
 ca. 0,02 m |
 1,5 m x 50 mm |
 40 Rolls



› Application of Eurovent® FASSADE X in cladding facade construction

- 1 Eurovent® FASSADE X
- 2 Eurovent® SPECIAL N FR 5000
- 3 Eurovent® ALUFIX
- 4 Construction
- 5 Facade cladding
- 6 Thermal insulation



MATT

- Single-layer separation mat.
- Used for sloping, insulated and ventilated roofs and facades
- Recommended under metal coverings and elevations.
- Drains condensate.
- Acoustic isolation, reduces noise to about 25 dB.



ca. 300 g/m²



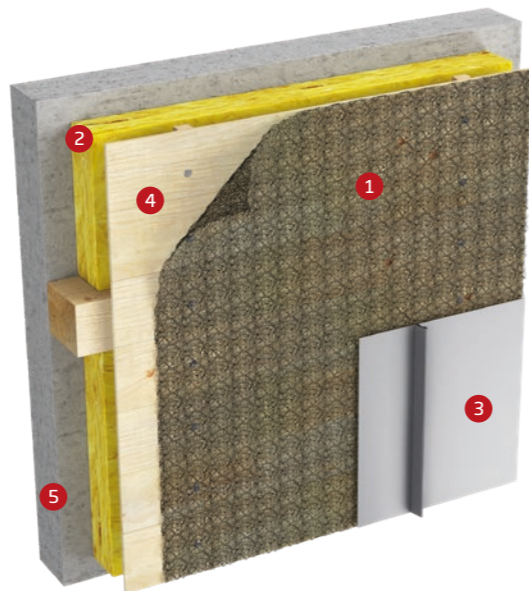
≥ 7,5 mm



1,4 m x 25 m



9 Rolls



› Application of Eurovent® MATT in facade construction

- 1 Eurovent® METALLIC
- 2 Thermal insulation
- 3 Metal sheet finished on a standing seam
- 4 Fully sarking
- 5 Wall



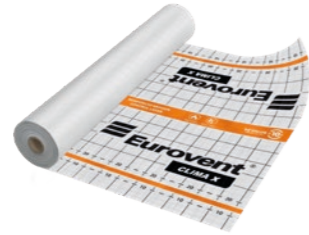
VAPOUR BARRIER MEMBRANES

Active membranes are used as a vapour barrier layer for roofs and walls in case of residential, commercial construction as well as specialized, innovative architectural projects.



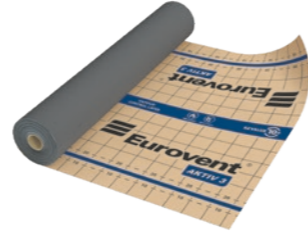
CLIMA

- Active vapour control membrane, resistant to tearing.
- Prevents vapour condensation.
- For pitched roofs, wall constructions and framed houses.
- Available in the SYSTEM SK2.



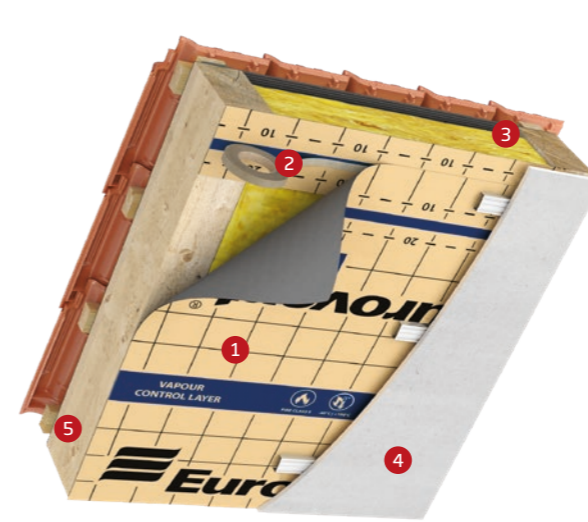
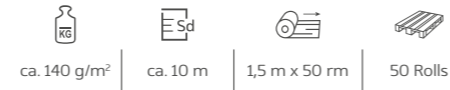
CLIMA X

- Active vapour control membrane, reinforced with PE mesh.
- Highly resistant to tearing.
- Prevents vapour condensation.
- For pitched roofs and wall constructions.
- Available in the SYSTEM SK2.



AKTIV 3

- Three-layer active vapour control membrane.
- Prevents vapour condensation.
- For pitched roofs, wall constructions and framed houses.
- Available in the SYSTEM SK2.



› Application of Eurovent® AKTIV 3 in attic insulation

- 1 Eurovent® AKTIV 3
- 2 Eurovent® DUO
- 3 Thermal insulation
- 4 Plasterboard
- 5 Rafter



› Application of Eurovent® CLIMA X on timber frame wall

- 1 Eurovent® CLIMA X
- 2 Eurovent® UNISAN
- 3 Eurovent® WALL PROTECT 3
- 4 OSB board
- 5 Plasterboard
- 6 Thermal insulation



AKTIV FR

- Three-layer aluminum active vapour control membrane. Reflects of heat rays.
- Prevents vapour condensation.
- Suitable for sloping roofs, timber houses and specialized wall constructions
- Flammability class - B-s1, d0**.
- Available in the SYSTEM SK2.



ca. 150 g/m²



ca. 150 m



1,5 m x 50 rm



40 Rolls



STANDARD ALU

- Metallized vapour barrier foil, reinforced PE mesh.
- Used for wall, roof and ceiling constructions as an isolation protective layer.
- Its metallized surface reflects heat rays.
- Class B-s1, d0 available on request.



ca. 180 g/m²



ca. 150 m

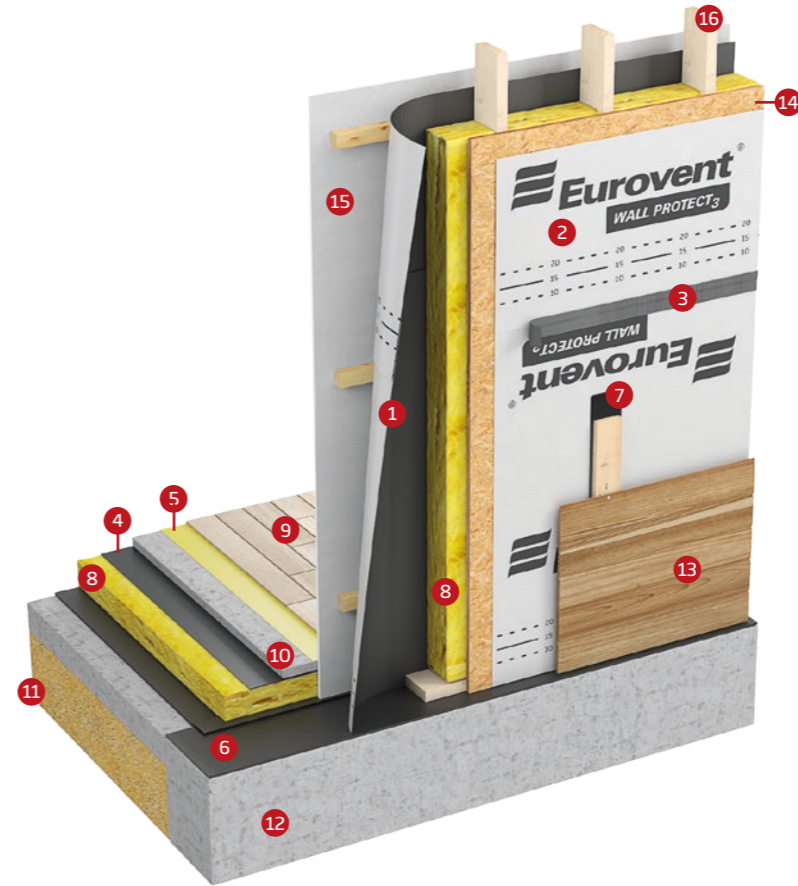


1,5 m x 50 rm



60 Rolls

* on order **supported with substrate



› Application of Eurovent® AKTIV FR in timber frame construction

- 1 Eurovent® AKTIV FR
- 2 Eurovent® WALLPROTECT 3
- 3 Eurovent® TOPBAND
- 4 Eurovent® MAUER PVC
- 5 Eurovent® DB
- 6 Eurovent® MAUER PVC
- 7 Eurovent® EPDM PRO
- 8 Thermal insulation
- 9 Floor panel
- 10 Concrete floor
- 11 Gravel
- 12 Foundation
- 13 Cladding
- 14 OSB board
- 15 Plasterboard
- 16 Wall construction

CERTIFICATE



EMICODE®

It is a system of quality control and classification of building materials according to the level of emission of dangerous substances.

Materials classified as „very low emission“ have the **GEV EMICODE® EC1 PLUS** label, which offers the highest level of safety for healthy indoor air.



MPA

Expanding tapes Eurovent® received technical approval issued by the Research Institute of building materials and production technology (Materialprüfanstalt für das Bauwesen und Produktionstechnik Hannover/ MPA Hannover).

Tapes are classified as flame retardant materials in accordance with the standard **DIN 4102-1: 1998-05**.



DIN 4108/7

This is a standard that defines the airtightness of a building material or part of a building, which means that air does not pass through the element or to a limited extent.

These materials prevent the ventilation of the structure and ensure the tightness of the connection.



ÉMISSIONS DANS L'AIR INTÉRIEUR

Information on indoor air emission levels of volatile substances, with a risk of toxicity by inhalation, on a class scale ranging from A+ (very low emissions) to C (high emissions).



TU BERLIN

The Technische Universität Berlin is one of the leading research universities in Germany. It carries out various tests and confirms outstanding parameters of building products.



BBA

Commonly referred to as a BBA Agrément Certificate. This is an authoritative document proving the fitness for the purpose of a construction product and its compliance or contribution to compliance with the various Building Regulations applying in the United Kingdom. The British Board of Agrément (BBA) is a UK body issuing certificates.



ZVDH

Approved by German Central Association of the Roofing Trade (ZVDH). The Association defines technical rules for membranes and grants quality approvals based on which a comprehensive protection is granted – **Material Warranty ZVDH**



CE

CE marking is a certification mark that indicates conformity with health, safety, and environmental protection standards for products sold within the European Economic Area (EEA) The CE marking is the manufacturer's declaration that the product meets the requirements of the applicable EC directives.



KOMO

Approved by accredited SKH institute in the Netherlands. The KOMO quality mark is based on an Assessment Directive (AD). KOMO is the quality label for construction and is an international concept.

ACCESSORIES

Self-adhesive tapes, membrane repair tapes, adhesives, windows and roof vents accessories.



VENTOS X

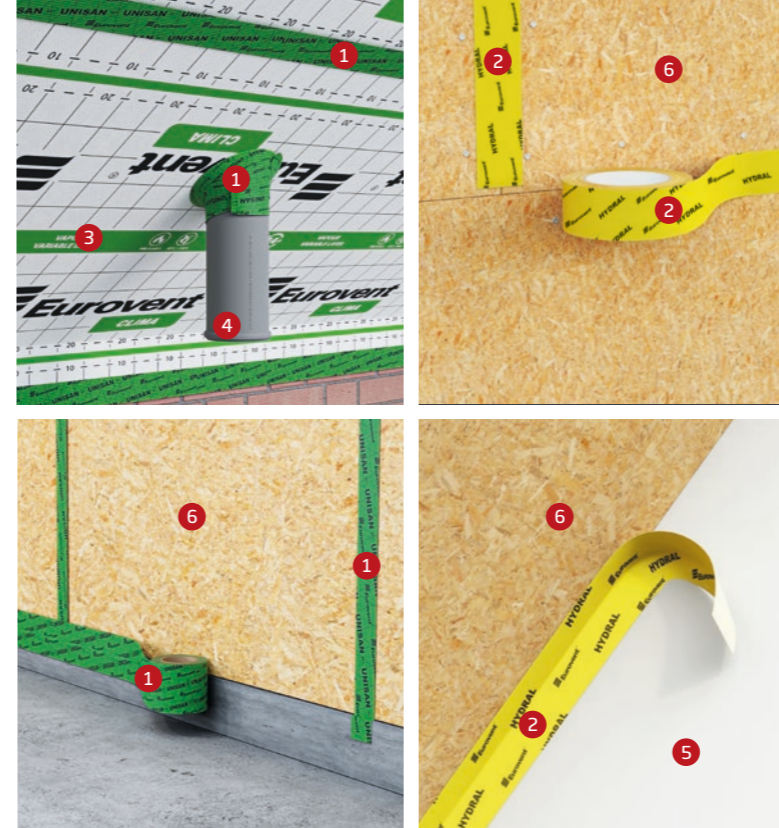
- Roof vent manufactured from high quality plastic for sloping roofs of an angle ranging from 10 to 45 degrees.
- For roofs covered with metal sheet or shingle.
- Condensate draining system.
- Profiled base protect from rain or snow.

150 mm |
 RAL: 8004; 8019; 9005; 8017; 6020; 7024; 7036; 3009; 7016 |
 1 set |
 36 sets



› Application of Eurovent® VENTOS X

- | | |
|-----------------------------------|-----------------------------|
| 1 Eurovent® VENTOS X METAL | 3 Eurovent® PUR |
| 2 Eurovent® STRONG | 4 Thermal insulation |
| | 5 Metal roof tiles |



› Application of Eurovent® UNISAN & HYDRAL

- | | |
|---------------------------|-----------------------|
| 1 Eurovent® UNISAN | 4 Venting pipe |
| 2 Eurovent® HYDRAL | 5 Wall |
| 3 Eurovent® CLIMA | 6 OSB board |

UNISAN

- Universal, single-sided tape made of PE mesh, reinforced with polyester fiber and special acrylic dispersion adhesive.
- Used in construction, for bonding and repairing vapour-barrier foils as well as roofing membranes, for fixing installation damages.



> 5°C |
 50 mm x 25 mm | 120 mm x 25 mm |
 10 rolls | 4 rolls

HYDRAL




- Single-sided assembly tape made of waterproof paper and a special glue based on acrylic dispersion, solvent-free and chlorine - free.
- Used for gluing and repairing foils and vapour-barrier membranes as well as for sealing joints of wood-based materials and plaster boards.



> 5°C |
 50 mm x 25 mm |
 12 rolls




UNO

- Universal, single-sided tape made of PE foil, reinforced with polyester fiber and special acrylic dispersion adhesive.
- Used for sealing and repairing foils and membranes made of plastic as well as for joining them with wood and metallized elements.

 > 5°C |
  50 mm x 25 rm |
  12 rolls

TOPBAND

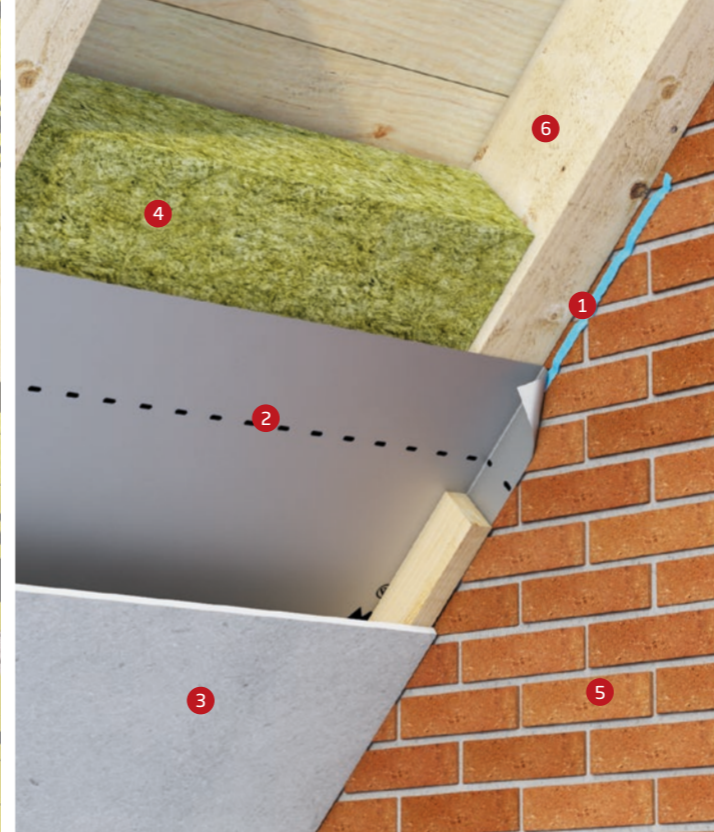
- One-sided sealing tape made of polypropylene nonwoven and acrylic dispersion adhesive.
- Used for sealing and repairing roof membranes, wind insulation and other polypropylene based products.

 > 5°C |
  50 mm x 25 rm |
  12 rolls



› Application of Eurovent® TOPBAND & UNO

- | | |
|----------------------------|--------------------------|
| 1 Eurovent® TOPBAND | 4 Eurovent® AKTIV |
| 2 Eurovent® UNO | 5 Construction |
| 3 Eurovent® SUPER | |




› Application of Eurovent® MULTI

- | | |
|---------------------------------|-----------------------------|
| 1 Eurovent® MULTI | 4 Thermal insulation |
| 2 Eurovent® STANDARD ALU | 5 Wall |
| 3 Plasterboard | 6 Rafter |

DUO

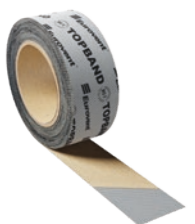
- Double-sided tape made of polyester mesh, coated on both sides with special adhesive based on acrylic dispersion
- Used for joining vapour-barrier foils, roof membranes and other construction products based on plastics.

 > 5°C |
  20 mm x 25 rm |
  14 rolls

MULTI

- Highly adhesive, solvent-free and odourless general purpose adhesive, ideal for sealing vapour-barrier and buildings interiors. Strongly resistant to aging.
- Flexible and stretchable, susceptible to building movements - dilatation sealing. Suitable for plastering.

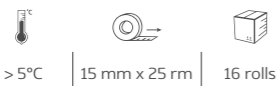
 -10°C |
  310 ml |
  20 pcs.





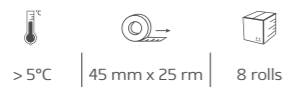
BUTYL

- Double-sided, solvent-free tape, made on the basis of butyl, with a separating silicon paper layer.
- Used for joining and sealing vapour-barrier, roof and foundation foils and other construction products based on plastics.



BUTYL PRO

- Double-sided, solvent-free tape.
- Used as sealing tape under battens as well as for joining and sealing vapour-barrier foils, roof membranes and wind-barrier membranes in frame construction.



› Application of Eurovent® PUR & BUTYL

- 1 Eurovent® PUR
- 2 Eurovent® BUTYL
- 3 Chimney
- 4 Counter batten
- 5 Batten
- 6 Eurovent® MAXI



› Application of Eurovent® UNO COLD UV

- 1 Eurovent® UNO COLD UV
- 2 Eurovent® FASSADE
- 3 Facade
- 4 OSB board



PUR

- One-sided sealing tape, made of polyethylene foam with closed cells structure and coated on one side with adhesive based on acrylic dispersion.
- Recommended for sealing and isolation of roof and building constructions.



UNO COLD UV

- Single-sided, tape made of PE mesh, reinforced with polyester fiber and special acrylic dispersion adhesive, additionally UV-stabilised.
- Used for sealing and repairing foils and membranes, also for insulation of technical passage.
- For sealing plastic materials based on polypropylene and polyethylene.
- Dedicated especially for application in minus temperatures and for use in areas exposed to UV rays.



AKTIVBAND SK

- Interior vapour-barrier window tape suitable for the insulation of window mounting holes, blinds and doors in the so called "Warm Installation" technology.
- Made from special nonwoven fabric as well as vapour-barrier film, coated on one side with a layer of adhesive on the whole surface which facilitates its application to the window frame and to the wall.
- Does not require extra adhesive or preparation for grounds priming.

 > 5°C	 70 mm x 25 mm	 1 rolls 4 rolls
	100 mm x 25 mm	
	150 mm x 25 mm	

AKTIVBAND SK2

- Interior vapour-barrier window tape suitable for the insulation of window mounting holes, blinds and doors in the so called "Warm Installation" technology.
- Made from special nonwoven fabric as well as vapour-barrier film, coated on one side with a layer of adhesive on the whole surface.
- Equipped with an adhesive stripe 20 mm (SK2) on the other side which facilitates its application to the window frame and to the wall.
- Does not require extra adhesive or preparation for grounds priming.

 > 5°C	 70 mm x 25 mm	 1 rolls 4 rolls
	100 mm x 25 mm	
	150 mm x 25 mm	



› Composition of Eurovent® AKTIVBAND SK & AKTIVBAND SK2

- 1 Silicon paper layer
- 2 Special acrylic adhesive layer - SK
- 3 Nonwoven fabric with vapour-barrier film
- 4 Additional adhesive strip - SK2



› Application of Eurovent® DIFFUBAND SK

- | | |
|--------------------------|----------|
| 1 Eurovent® DIFFUBAND SK | 4 Window |
| 2 Eurovent® UNO | 5 Batten |
| 3 Eurovent® HOME PRO | 6 Facade |

DIFFUBAND SK

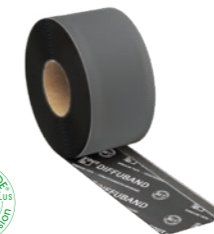
- Exterior vapour-permeable window tape suitable for the insulation of window mounting holes, blinds and doors in the so called "Warm Installation" technology.
- Made from special nonwoven fabric, coated on one side with a layer of adhesive on the whole surface which facilitates its application to the window frame and to the wall.
- Does not require extra adhesive or preparation for grounds priming.

 > 5°C	 70 mm x 25 mm	 1 rolls 4 rolls
	100 mm x 25 mm	
	150 mm x 25 mm	

AKTIVBAND SK2

- Exterior vapour-permeable window tape suitable for the insulation of window mounting holes, blinds and doors in the so called "Warm Installation" technology.
- Made from special nonwoven fabric, coated on one side with a layer of adhesive on the whole surface.
- Equipped with an adhesive stripe 20 mm (SK2) on the other side which facilitates its application to the window frame and to the wall.
- Does not require extra adhesive or preparation for grounds priming.

 > 5°C	 70 mm x 25 mm	 1 rolls 4 rolls
	100 mm x 25 mm	
	150 mm x 25 mm	





BG 2

DIN 18542
According to



COMPRE 300

- Expanding tape made of flexible polyurethane foam soaked with modified acrylic.
- Flammability class B2.
- Sealing class ≥ 300 hPa.
- Suitable for the installation of windows, doors and garage doors. Moreover, for sealing holes, cracks and grouts in roofs, windows and elevations.
- It is recommended to protect it against long lasting activity of atmospheric factors.
- Especially recommended for the insulation of grouts in constructions with a jamb.
- Insulates against moisture, wind, rain, cold and acoustically.



> 5°C



> 300 hPa



black
grey*

*on order

› Technical data COMPRE 300

Tape	Width [mm]	Slit size [mm]	Roll length [m]	Box
10/2-3	10	2-3	12,5	48
15/2-3	15	2-3	12,5	32
20/2-3	20	2-3	12,5	24
15/3-6	15	3-6	10	32
20/3-6	20	3-6	10	24
15/4-8	15	4-8	8	32
20/4-8	20	4-8	8	24
15/5-10	15	5-10	8	32
20/5-10	20	5-10	8	24
15/7-12	15	7-12	6	32
20/7-12	20	7-12	6	24
25/7-12	25	7-12	6	19
30/7-12	30	7-12	6	16
20/9-15	20	9-15	4,3	19
25/9-15	25	9-15	4,3	19
30/9-15	30	9-15	4,3	16
40/10-18	40	10-18	4	18
30/14-24	30	14-24	4	16
40/14-24	40	14-24	4	12



BG 2

DIN 18542
According to



COMPRE 600

- Expanding tape made of flexible polyurethane foam soaked with modified acrylic.
- Flammability class B1.
- Sealing class ≥ 600 hPa.
- Suitable for the installation of windows, doors and garage doors as well as for technical sealings in elevations, windows, doors and roofs.
- Resistant to heavy rains as well as to UV radiation, does not require protection against the activity of atmospheric factors.
- Insulates against moisture, wind, rain, cold and acoustically.
- Especially recommended for frame construction, passive houses and for constructions with a jamb.



> 5°C



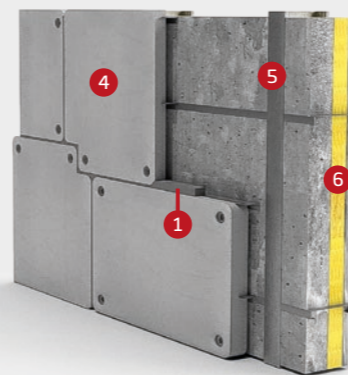
> 600 hPa



black

› Technical data COMPRE 600

Tape	Width [mm]	Slit size [mm]	Roll length [m]	Box
15/7-12	15	7-12	8	32
20/7-12	20	7-12	8	24
30/7-12	30	7-12	8	16
20/9-15	20	9-15	4,3	24
25/9-15	25	9-15	4,3	19
30/9-15	30	9-15	4,3	16
35/18-32	35	18-32	2	14
40/24-40	40	24-40	2	12
50/24-40	50	24-40	2	9

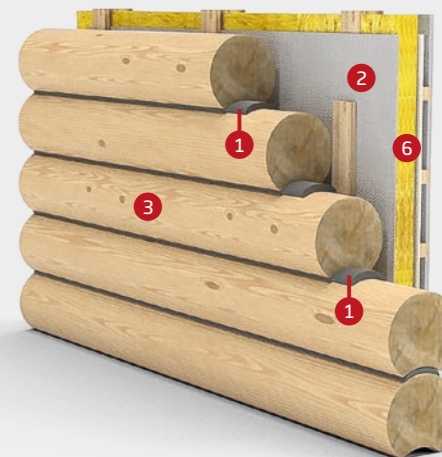


Eurovent® COMPRE 600

Used as waterproof and windproof sealings in prefabricated elements built from concrete, metal and wood, clinker facades, as a joining of shutterings, or a sealing of outer joints. It is also suitable as an insulation of slits by window, door joinery, as well as in constructions with jamb. The tape in class > 600 hPa does not require to be covered after its installation, as it is completely resistant to long-lasting UV radiation.

› Application of Eurovent® COMPRE 600

- 1 Eurovent® COMPRE 600
- 2 Eurovent® WALL PROTECT
- 3 Wood log
- 4 Facade
- 5 Wall
- 6 Thermal insulation





DIN 18542
According to



COMPRE 3W

- Multifunctional expanding tape made of flexible polyurethane foam soaked with synthetic resin.
- Flammability class B1.
- Sealing class ≥ 600 hPa.
- Resistant to atmospheric factors and UV radiation.
- Dedicated for the installation of windows, doors and garage doors as well as for sealings of grouts and installation cracks.
- Ensures thermal and acoustic insulation, insulates against moisture, wind and rain.
- Replaces installation foam and window tapes when installing windows, doors and garage doors too.

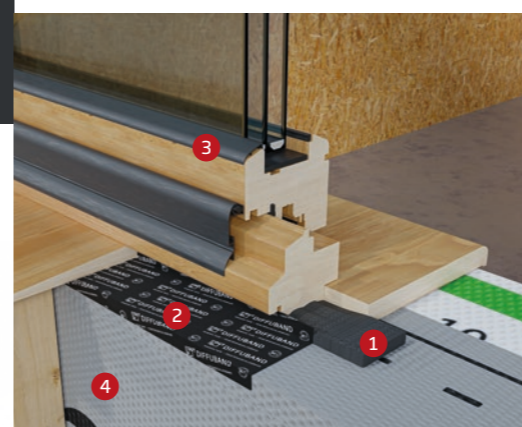
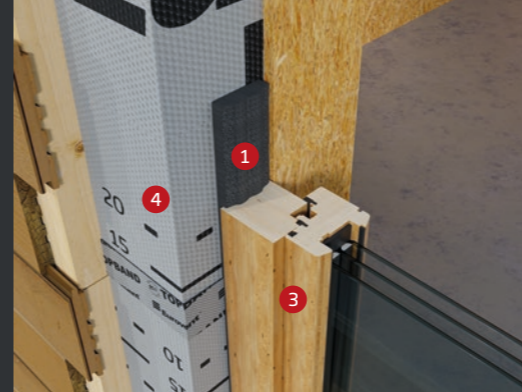
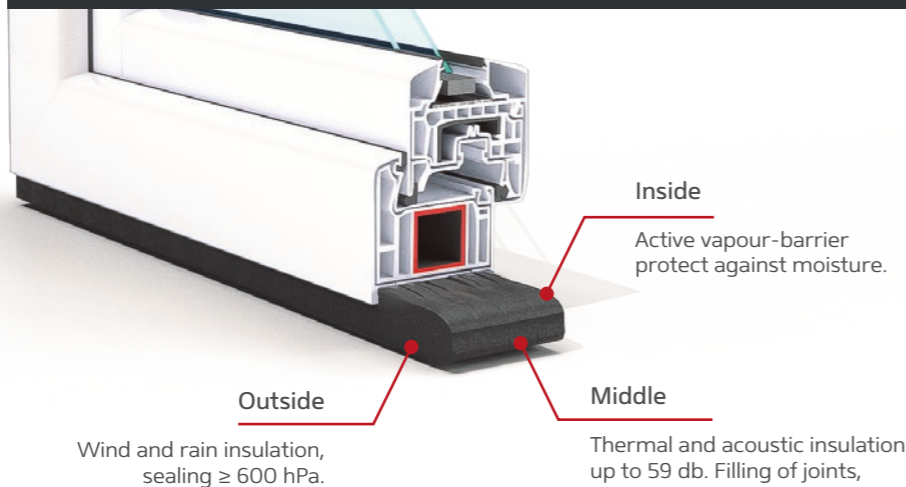


> 5°C



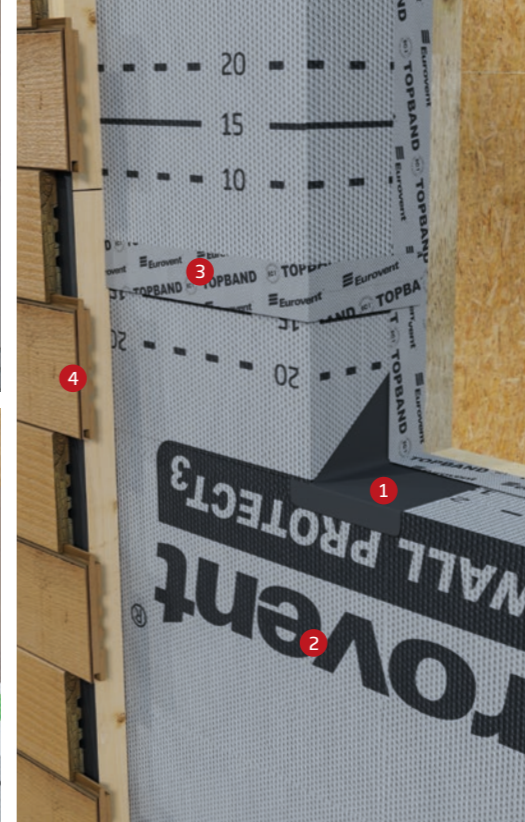
> 600 hPa

Tape	Window frame [mm]	Width [mm]	Slit size [mm]	Roll length [m]	Box
64/5-10	70	64	5-10	8	7
74/5-10	80	74	5-10	8	6
84/5-10	90	84	5-10	8	5
64/10-20	70	64	10-20	6	7
74/10-20	80	74	10-20	6	6
84/10-20	90	84	10-20	6	5



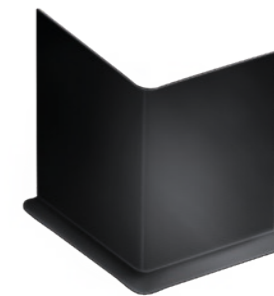
> Application of Eurovent® COMPRE 3W

- 1 Eurovent® COMPRE 3W
- 2 Eurovent® DIFFUBAND
- 3 Window
- 4 Eurovent® WALL PROTECT 3



> Application Eurovent® CORNER PRO

- 1 Eurovent® CORNER PRO
- 2 Eurovent® WALL PROTECT 3
- 3 Eurovent® TOPBAND
- 4 Facade



CORNER PRO

- Sealing coin is used as a sealing element of a membrane and foil joinings in doors and windows coignes.
- Recommended for frame and module constructions, as a complementary element of insulating systems.



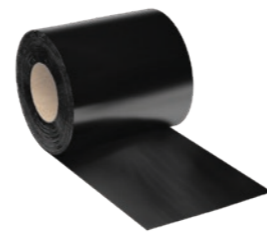
- 30°C up to
+ 100°C



100 mm x 120 mm
160 mm x 120 mm



50 pcs.



EPDM PRO

- External sealing tape from synthetic rubber of a structure increasing adhesiveness.
- Used for outside vertical and horizontal damp proof insulation as well as for sealing connections between doors, windows, windowsills, elevation and a building construction.
- Recommended for insulation of terraces and balconies areas.
- Irreplaceable by warm installation of window and aluminium joinery especially in the places exposed to increased moisture activity.
- The tape of gauge 1,1 mm may be applied in places of direct contact with base surface



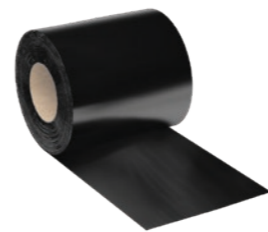
0,75 mm
1,1 mm



50 mm; 60 mm;
100 mm; 110 mm;
130 mm; 150 mm;
200 mm; 250 mm;
300 mm; 400 mm;
500 mm x 25 mm



60 mm: 5 rolls
50; 100; 150;
200 mm: 4 rolls
others: 2 rolls



EPDM PRO SK

- External sealing tape from synthetic rubber of a structure increasing adhesiveness.
- Integrated with a self-adhesive butyl strip.
- Used for outside vertical and horizontal damp proof insulation as well as for sealing connections between doors, windows, windowsills, elevation and a building construction.
- Recommended for insulation of terraces and balconies areas.
- Irreplaceable by warm installation of window and aluminium joinery especially in the places exposed to increased moisture activity.
- The tape of gauge 1,1 mm may be applied in places of direct contact with base surface.



0,75 mm
1,1 mm



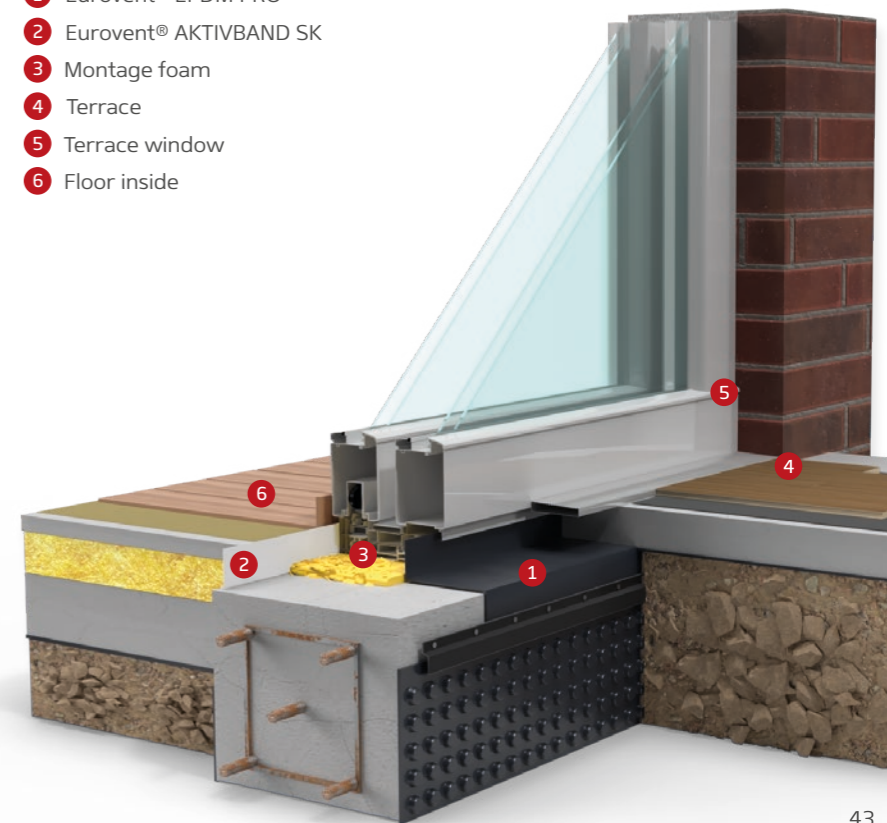
100 mm; 150 mm;
200 mm; 250 mm;
300 mm; 400 mm;
500 mm x 25 mm



100-200 mm: 4 rolls
others: 2 rolls

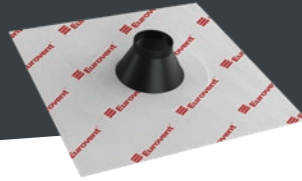
› Application of Eurovent® EPDM PRO

- 1 Eurovent® EPDM PRO
- 2 Eurovent® AKTIVBAND SK
- 3 Montage foam
- 4 Terrace
- 5 Terrace window
- 6 Floor inside





SEALING COLLAR

Sealing collar, called as sealing sleeves in other words, serve for durable sealing of cable, solar passages and pipes.



SEAL



- Sealing collar used for solar connections and different pipe systems, e.g. for sealing heating, sewage, ventilation pipes that drain rainwater, etc.

	∅		
R1	15-22 mm	150 x 150 mm	10 pcs.
R2	25-32 mm	150 x 150 mm	10 pcs.
R3	40-55 mm	230 x 230 mm	10 pcs.
R4	50-72 mm	230 x 230 mm	4 pcs.
R5	72-90 mm	230 x 230 mm	4 pcs.
R6	100-110 mm	320 x 320 mm	4 pcs.
R7	100-125 mm	350 x 350 mm	4 pcs.
R8	125-135 mm	320 x 320 mm	4 pcs.



MINI SEAL

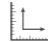

- Sealing collar used for cable connections of diameters 4-8 mm and 8-12 mm

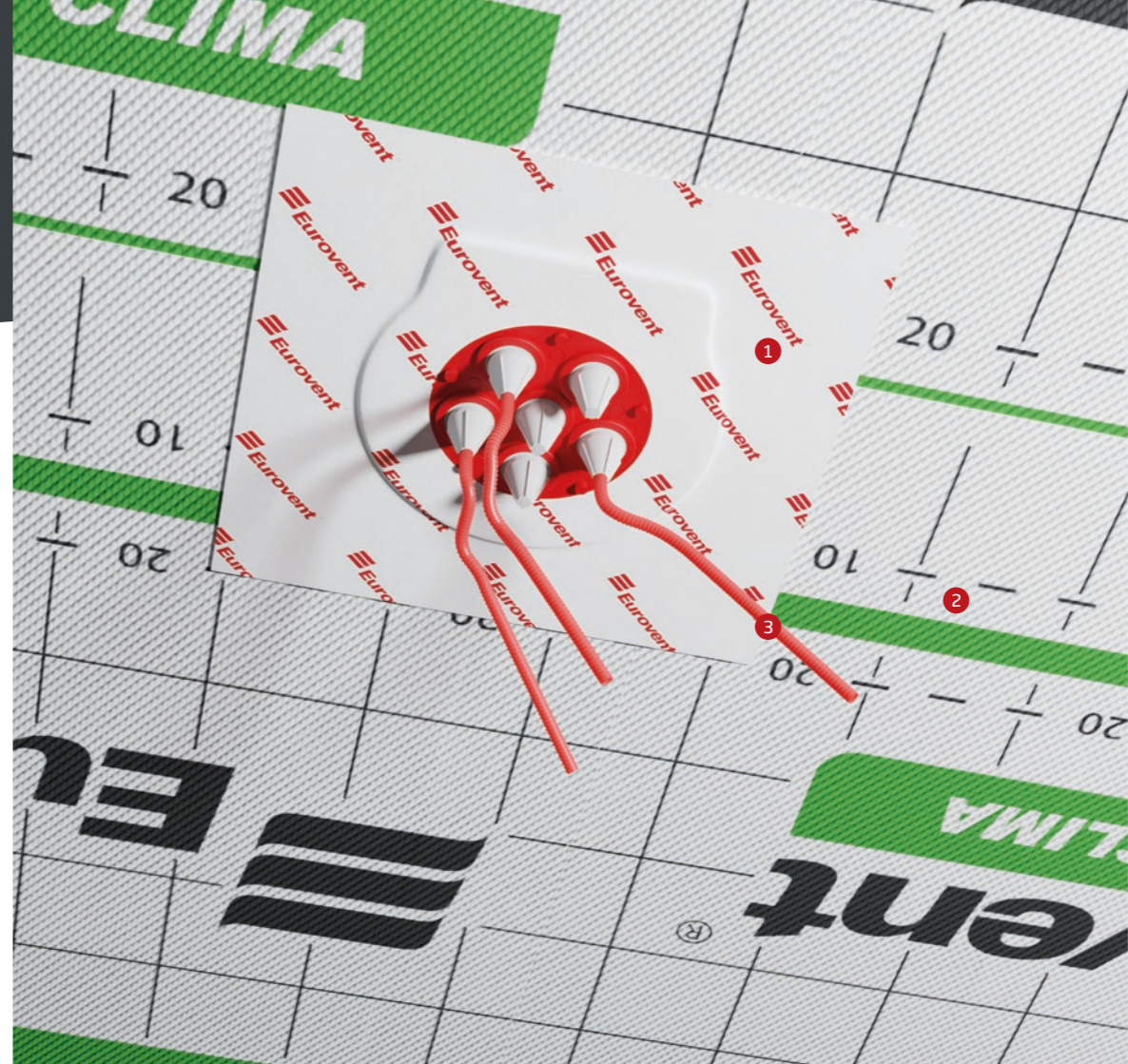
	∅		
K1	4 - 8 mm	150 x 150 mm	10 pcs.
K2	8 - 12 mm	150 x 150 mm	10 pcs.



MULTI SEAL

- Six-ducts sealing collar designed for quick cable connections sealing. Used for cables of diameter 4-11 mm and pipes of 8-12 mm diameter

	∅		
KM1	6 x 4 - 11 mm	230 x 230 mm	10 pcs.
RM2	6 x 16 - 25 mm	320 x 320 mm	10 pcs.



› Application of Eurovent® MULTI SEAL

- 1 Eurovent® MULTI SEAL
- 2 Eurovent® CLIMA
- 3 Cable bundles sheath

› Durable sealing

- cable connections
- solar connections
- pipes connections



ICONOGRAPHY

Description of the symbols used to describe products parameters.



Roll size



Tape size



Mass per unit



Box



Sd value



Capacity



Thickness



Diameter



Pallet



Colour



UV resistance



Size



Driving rain resistance



Temperature

www.eurovent.de

All the information has been advertised in good faith, on the basis of our best knowledge, research and a whole range of experiences. The information does not constitute any sales proposal within the meaning of Civil Code. We reserve the right of possible technical changes as well as certain mistakes and errors in the print.

The reprint edition, also in the form of extracts, only with the Eurosystem Polska Sp. z o.o. Sp. K consent.