

## Eurovent VENTOS X ROTO

Eurovent® VENTOS X ROTO is an advanced roofing vent with the venting diameter of 150 mm and the venting entry of 170 mm, made of high-quality plastic, aluminium and galvanised steel. It is equipped with supporting turbine that ensures low rotating resistance and high efficiency. The turbine is equipped with 15 aluminium guide vanes, shaped the way it strengthen natural draught of the venting channel, preventing changing the direction of the venting process (preventing downdraft). The construction of the roofing vent supports ventilation by using wind energy and ensures correct chimney draft. It has an anti-condensation system that removes condensation outside the roof. The profiled base prevents rainwater from flowing in. Tilt angle adjustment from 5 ° to 45 °. It has many different bases fitting many types of the roofing covers. Available in several of the most popular color versions according to RAL colors.



PARAMETER	UNIT	VALUE
Material		Dyed polypropylene with UV stabilizer + butyl seal
Application angle	[°]	5-45
Available colours	[RAL]	Wall red 8004; Chestnut 3009*; Brown 8017; Brown 8019*; Green 6020*; Black 9005; Anthracite 7021; Graphite 7024*; Grey 7036*
Diameter	[mm]	Ø 150
Available models		METAL N25, METAL G18, METAL M11, BITU O, T18, METAL C, METAL R, METAL F22, METAL R28, METAL W35, METAL B26, BITU UNI,
UV resistance		Resistant
Set		Chimney + base + screws
Sealing		Butyl seal
Package weight	[kg]	ca. 2,0
Box	[set]	1
Pallet	[sets]	36

### Advantages:

- UV resistance • According to PN-83 / B-03430 • The turbine empowers natural air draft
- Wide ventilation surface • Ensures correct run of the air • Fast and easy instalation
- Suitable for almost all types of roof coverings • Prevents air backdraft

## Eurovent VENTOS X ROTO

### Application:

Eurovent® VENTOS X ROTO roofing vent is used as a roof exhauster for mechanical and gravity ventilation ducts in residential and public buildings. The Eurovent® VENTOS X ROTO venting vent meets the PN-83 / B-03430 standard with the amendment / Az3. The bases are adapted for installation on sloping roofs covered with many different types of the roofing covers. Tilt angle adjustment from 5 ° to 45 °.

### Base plates:

Water tight base plates for Eurovent ROTO X enable easy and quick installation on different kinds of metal roofing sheets and bitumen shingles.



METAL N25



METAL G18



METAL M11



METAL T18



METAL W35



METAL F22



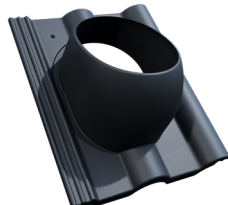
BITU O



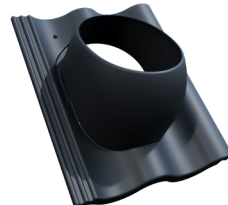
METAL B26



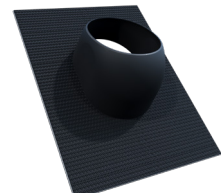
METAL R28



METAL R



METAL C



METAL BITU UNI

## Eurovent VENTOS X ROTO

### Storage / transport:

The product should be stored in a dry place, under cover, free from moisture and UV radiation in original undamaged and closed package. Rolls should be transported in covered means of transport. They should be prepared for transport in a manner that protects them from damage and destruction. During transport safety regulations must be observed. The product should be protected from chemical agents, in particular solvent based substances, as they can reduce technical parameters of foil or permanently damage it.

### Additional note:

For assembly, it is recommended to use the screws provided in the package.

The product is covered by the warranty, provided that the guidelines included in the technical card are strictly observed. The manufacturer reserves the right to refuse to accept a complaint in the event of failure to comply with the guidelines provided.

*obtained information, advice and guidance is given based on our knowledge, researches, experience and in good faith. We are not responsible for the consequences of improper or incorrect use of our products. Each user of this material will ensure in every possible way, including an examination of the final product in the relevant conditions, the suitability of supplied materials to achieve the objectives pursued by him.*

Product information can be found on the website: [www.eurovent.de](http://www.eurovent.de)

Update date: 06/2021