

## TECHNICAL DATA SHEET

### Eurovent VENTOS X FLAT

The Eurovent flat air vent chimney VENTOS X FLAT is made of plastic. The profiled base prevents rainwater from flowing in. Used on sloping roofs with an angle ranging from 5° to 45°, covered with metal, concrete, ceramic roof tiles or bituminous shingle. Available in several of the most popular color versions according to RAL colors.



PARAMETER	UNIT	VALUE
Material		Dyed polypropylene with UV stabilizer + butyl seal
Application angle	[°]	10 - 45
Base dimension	[cm]	24 x 32,2 ± 3 %
Type of coverage		- flat metal sheet; - blacha na rąbek stojący; - trapezoidal sheet regardless of trapezoidal type; - shingles; - roofing felt;
Available colors	[RAL]	Wall red RAL 8004, brown RAL 8017, black RAL 9005, graphite RAL 7024, chestnut RAL 3009, green RAL 6020, brown RAL 8019, anthracite RAL 7016, light gray RAL 7036
Available diameters	[mm]	Ø 150
UV resistance		Resistant
Set		Base plate + air vent + butyl seal + screws
Sealing		Butyl seal
Package weight	[kg]	ca. 1
Box	[pcs]	1 set

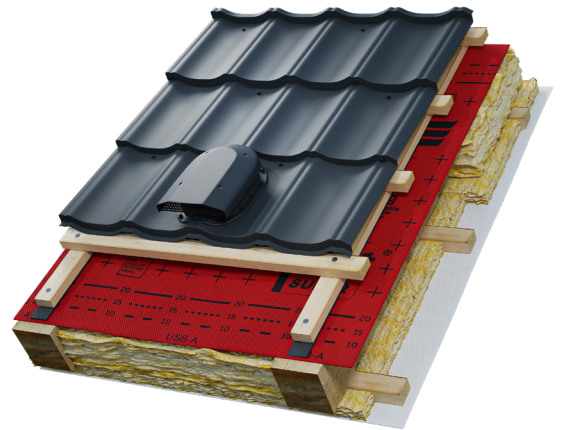
#### Advantages:

- Fast and easy installation
- UV resistance

## Eurovent VENTOS X FLAT

### Application:

The roof vent is primarily intended for ventilation, proper thermal insulation and for releasing water vapor that accumulates under the waterproof roof covering. Used for ventilation of humid air from under the roof slope, ensures proper and adequate air circulation and roof ventilation. Proper installation involves alternating mounting of vents on both sides of the roof, at a maximum distance of 60 cm from the ridge. Suitable for almost all types of roofing.



### Base plates:

Water tight bases vent chimney for Eurovent VENTOS X FLAT enable easy and quick installation on different kinds of metal roofing sheets and bitumen shingles.



METAL B26



METAL F22



METAL G18



BITU O



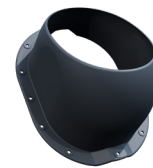
METAL M11



METAL N25



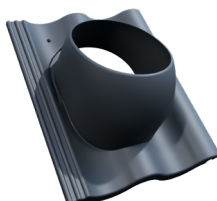
METAL R28



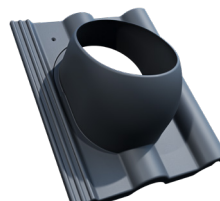
METAL T18



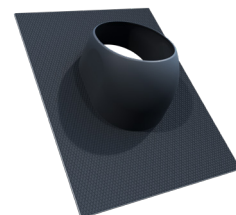
METAL W35



C



R



BITU UNI

## Eurovent VENTOS X FLAT

### Storage / transport:

Store the roof vent in closed original boxes. Protect against mechanical damage during storage. The product should be stored at room temperature, under roof in dry, free from moisture and direct UV radiation storage area. The product should be transported by covered means of transport, protected against damage. During transport, the safety regulations must be observed. The product should be protected against chemicals, especially solvent-based substances, as they may reduce its technical parameters, or it permanently damage.

The product is covered by the warranty, provided that the guidelines included in the technical card are strictly observed. The manufacturer reserves the right to refuse to accept a complaint in the event of failure to comply with the guidelines provided.

### Additional note:

For assembly, it is recommended to use the screws provided in the package.

*Contained information, advice and guidance is given based on our knowledge, researches, experience and in good faith. We are not responsible for the consequences of improper or incorrect use of our products. Each user of this material will ensure in every possible way, including an examination of the final product in the relevant conditions, the suitability of supplied materials to achieve the objectives pursued by him.*

Product information can be found on the website: [www.eurovent.de](http://www.eurovent.de)

Update date: 07/2021