

## EN ASSEMBLY INSTRUCTION

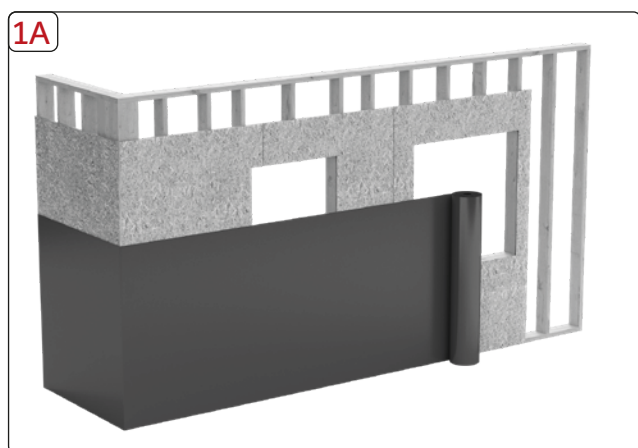
Assembly instruction for Eurovent® houswraps: HOME; HOME PRO; WALL PROTECT; WALL PROTECT 3; WALL PROTECT FR.

A properly installed windproof membrane aims to protect against uncontrolled airflow from the outside (which significantly increases energy loss), while allowing excess moisture to escape freely from the walls. In this way, it protects against excessive moisture (atmospheric and cumulative) and the permanent reduction of the building's thermal properties.

**Before installation:** Before starting the installation of the membrane, carefully check for any mechanical damage that may have occurred during transport or storage. Installing the membrane means accepting it as free from any damage.

The selection and application of the membrane should be made according to its intended use and functionality. Installation should be carried out in accordance with the technical project of the building, prepared in accordance with applicable building regulations and good construction practices, while considering the guidelines contained in this manual. After the installation, it is recommended that the work be approved by an authorised person to confirm the correct execution of the work. Do not use wood preservatives that react aggressively with polyethylene or polypropylene on wooden structures, as they may reduce the membrane's technical properties or permanently damage it.

**1:** To ensure proper functioning, the windproof membrane installation should begin at the bottom part of the wall, at its corner (leaving 15-30 cm for a vertical overlap at the corner), which allows for proper water drainage and prevents it from penetrating the wall structure. At the bottom, the windproof membrane should extend at least 5 cm below the edge of the wall. Unroll the membrane along the wall surface. Attach the windproof membrane to the wall using staples, nails, or other fasteners. Areas where the membrane is pierced by fasteners should be sealed with tape for windproof membrane joints and insulation (Eurovent® UNO COLD UV; TOPBAND).



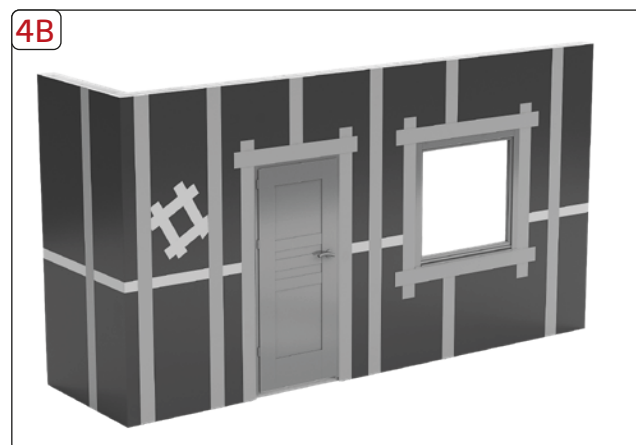
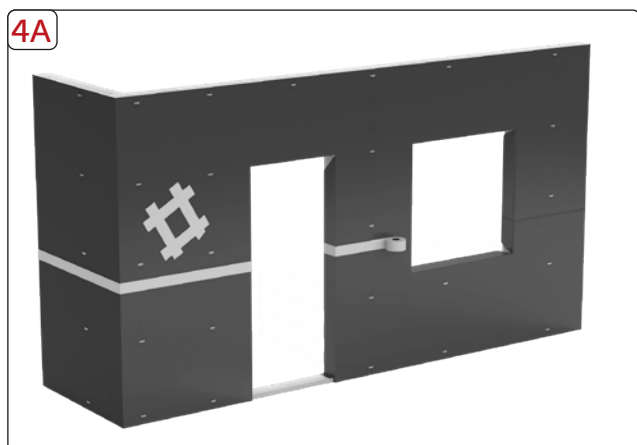
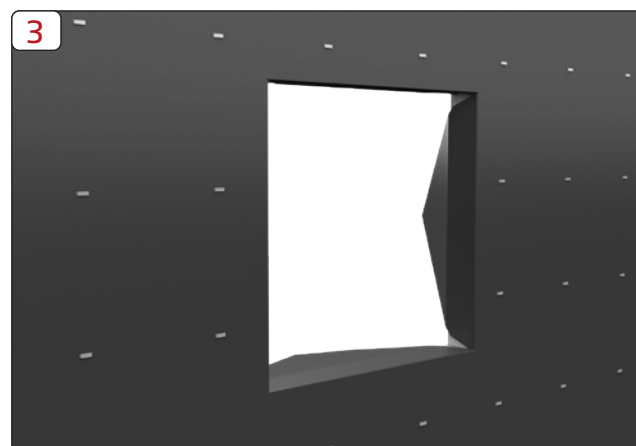
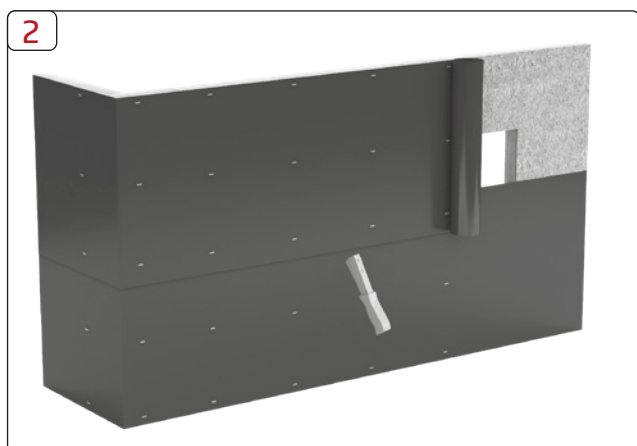
Update date: 06/02/2025

## EN ASSEMBLY INSTRUCTION

**2:** Attach subsequent layers of the membrane, ensuring that the overlap on the lower layer of the membrane is at least 15 cm, covering window and door openings.

**3:** Next, finish the edges around window and door openings.

**4:** All vertical and horizontal overlaps and joints of the windproof membrane should be sealed with special insulation tapes for windproof membranes (Eurovent® UNO COLD UV or Eurovent® TOPBAND) or tapes integrated with the SYSTEM SK2 membrane. Any damage or tears in the membrane should be repaired using appropriate repair tapes for windproof membranes (Eurovent® UNO COLD UV or Eurovent® TOPBAND).



Update date: 06/02/2025

## EN ASSEMBLY INSTRUCTION

**Additional recommendations:** Any penetrations, damage, and tears in the membrane must be repaired without exception using Eurovent® UNO COLD UV or Eurovent® TOPBAND windproof membrane tapes.

The product is covered by a warranty provided that the installation guidelines outlined in this manual are strictly followed. The manufacturer reserves the right to refuse to acknowledge a warranty claim if the installation instructions are not followed. The product label or sticker on the roll must be kept as a document entitling the submission of a warranty claim.

Rolls should remain in their original packaging until the moment of membrane installation. Rolls should be stored in covered, dry, moisture-free rooms. Rolls must be protected from UV radiation. Rolls must be transported in covered vehicles and protected from damage. The membrane should be protected from chemical agents, particularly solvent-based substances, as they can reduce the technical properties of the membrane or permanently damage it.

The use of the windproof membrane on the roof is justified only as windproofing for wall surfaces and thermal insulation of the roof and sloping attic – in which case, preliminary roof covering must be provided.

The information, recommendations, and guidance provided are based on our current best knowledge, research, and experience and are given in good faith. We are not responsible for the consequences of improper or incorrect use of our products. Each user of this material should ensure in every possible way, including testing the final product under relevant conditions, the suitability of the supplied materials for achieving the intended objectives.

Final coverage should be installed within 4 weeks after the windproof membrane is installed on the wall. After installation, it is recommended that the work be approved by an authorised person to confirm the correct execution of the work.

*Update date: 06/02/2025*