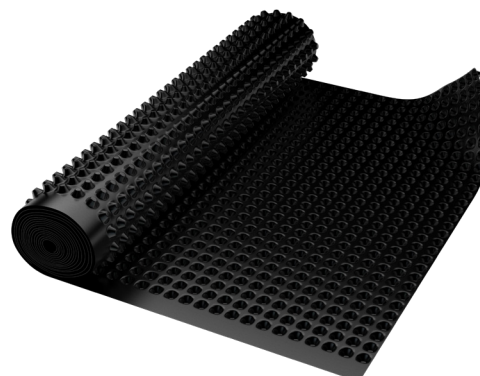


## TECHNICAL DATA SHEET

### Eurovent GEO 20

Studded foundation foil made of high-density polyethylene (HDPE) characterized by parallel 20 mm dimples. Foil is designed for use as vertical and horizontal waterproofing layer in build-ings. Product is extremely resistant to compression and its large dimples increase the drainage performance. In addition, foil also forms a layer of thermal and acoustic insulation. Product is resis-tant to acids, alkali, solvents, bacteria, fungus as well as damage caused by roots.

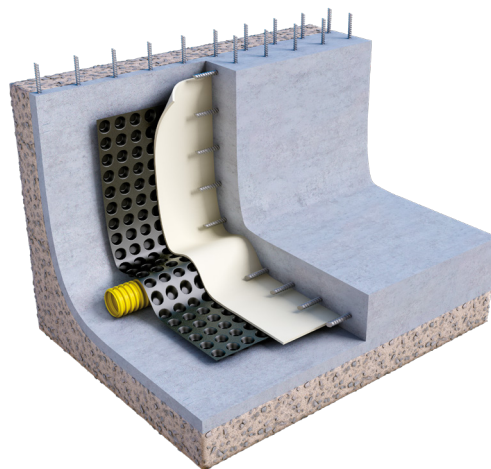


PARAMETER	VALUE	NORM
Watertightness	Watertightness to 60 kPa	EN 1928:2002 (60 kPa)
Waterproofing after artificial aging	Watertightness to 60 kPa	EN 1928:2002 po badaniu EN 1296 (70°C/ 12 tyg.)
Watertightness after chemicals	Watertightness to 60 kPa	EN 1928:2002 po badaniu EN 1847 (23°C/ 28 dni)
Maximum tensile force	MD ≥ 503 N/50 mm CMD ≥ 491 N/50 mm	EN 12311-2:2013
Elongation	MD 70 % (± 10,3) CMD 65 % (± 3,9)	EN 12311-2:2013
Compressive strength	160 kN/m <sup>2</sup> 160 kPa / 16 t/m <sup>2</sup>	EN ISO 25619-2
Resistance to static puncture (CBR)	> 1000 N	Int.Meth.
Fire resistance	Class F	EN 13501-1
Amount of stamping	about. 400 pcs.	-
Height of stamping (product thickness)	20 mm	-
Mass	800 g/m <sup>2</sup>	PN-EN 9864-1:2007
Thickness (in section)	0,82 mm	PN-EN ISO 9863-1:2007
Microbial resistance	Strength preserved 100%	PN-EN 12225:2002
Temperature resistant	- 40 °C to + 80 °C	

## Eurovent GEO 20

### Application:

GEO 20 foundation foil is designed for use as vertical insulation of foundation foils, especially recommended for application at in-depth engineering in underground railways and tunnels, underground parking lots and other similar constructions which require reliable protection and drainage. Higher dimples increase the draining surface. Foil proves an excellent solution for securing constructions where there is not enough room to establish the formwork – it is suitable for installation between the shotcrete and the concrete wall. Horizontal applications include protection against penetration of water in buildings where deep foundations are exposed to the risk of temporary fluctuations of subsurface water levels. It is then installed along the slope between the concrete slab and screed.



### Additional information:

Durability min. 50 years in natural soils with  $4 < \text{pH} < 9$  and temperature  $< 25^{\circ}\text{C}$

### Storage / transport:

The product should be stored in a dry place, under cover, free from moisture and UV radiation in original undamaged and closed package. The foil is heavy, therefore we recommend storing either on original EURO pallets, or other pallets suitable for storing heavy items. The product should be transported in covered means of transport. Prepared for transport in a manner that protects them from damage and destruction. During transport safety regulations must be observed.

The product is under warranty, providing that the guidelines contained in technical data sheet are being obeyed. We reserve the right to refuse a complaint recognition in case of not following these guidelines.

*Contained information, advice and guidance is given based on our knowledge, researches, experience and in good faith. We are not responsible for the consequences of improper or incorrect use of our products. Each user of this material will ensure in every possible way, including an examination of the final product in the relevant conditions, the suitability of supplied materials to achieve the objectives pursued by him.*

Product information can be found on the website: [www.eurovent.de](http://www.eurovent.de)

Update date: 12/2021